



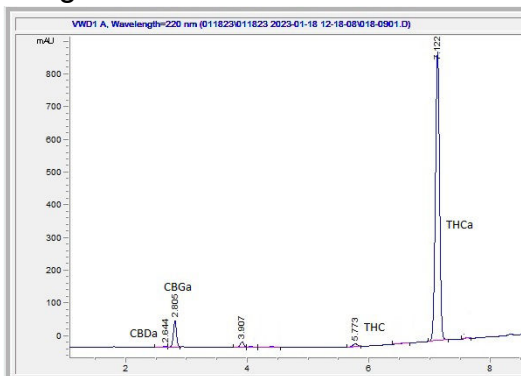
Sample XXXXXXXXXX

Cereal Milk (Stinky) THCa Flower
 Sample Submitted: 06-14-2023; Report Date: 06-14-2023

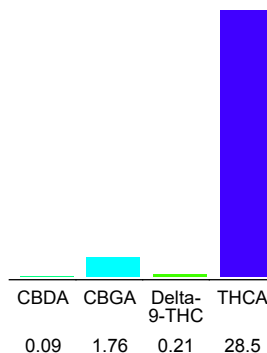
Cereal Milk (Stinky) THCa Flower

Plant Material: Flower

Chromatogram



Cannabinoid Profile



Cannabinoid Profile by HPLC

0.28%
 Delta-9-THC

0.00%
 CBD

28.55%
 Total Cannabinoids

Cannabinoid	% wt	mg/g
CBDA	0.09	0.9
CBGA	1.77	17.7
Delta-9-THC	0.28	2.8
THCA	28.5	285.0
Total Cannabinoids	29.33	293.3
Calculated THC Yield	28.82	288.20
Calculated CBD Yield	0.07	0.70
Calculated Maximum Delta-9-THC Yield = Delta-9-THC + 0.877 * THCA		
Calculated Maximum CBD Yield = CBD + 0.877 * CBDA		

Marin Analytics, LLC
 250 Bel Marin Keys Blvd, Suite D4
 Novato, CA 94949

415-936-6477 / sarabiancalana1@gmail.com

Sara Biancalana
Sara Biancalana
 Chief Scientist

This sample has been tested by Marin Analytics, LLC using valid testing methodologies and a quality system. Values reported relate only to the sample tested. Marin Analytics, LLC makes no claims as to the efficacy, safety or other risks associated with any detected or non-detected levels of any compounds reported herein. This Certificate shall not be reproduced except in full, without the written approval of Marin Analytics, LLC. Copyright 2022 Marin Analytics, LLC All Rights Reserved.